

## Ziegra UBE 5.000-2

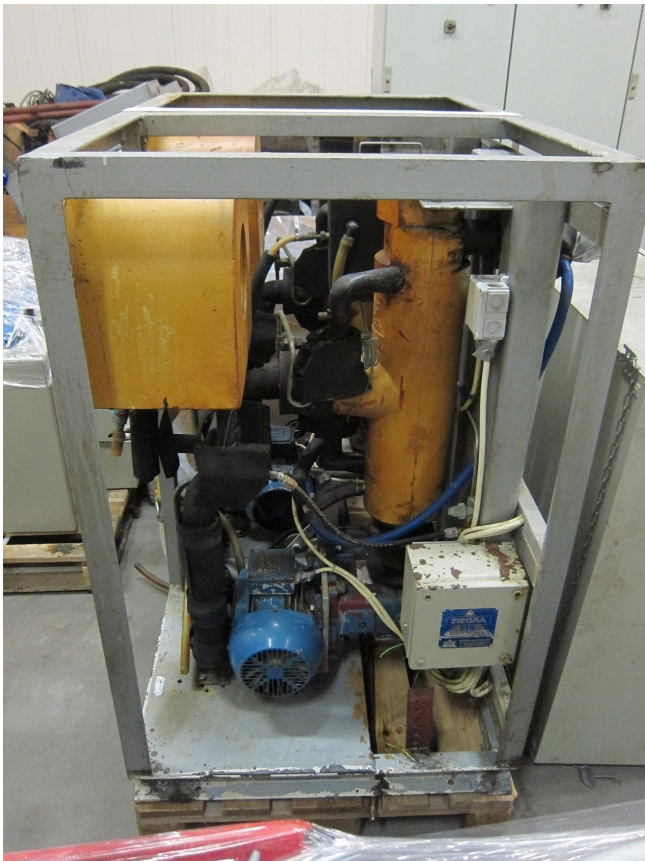
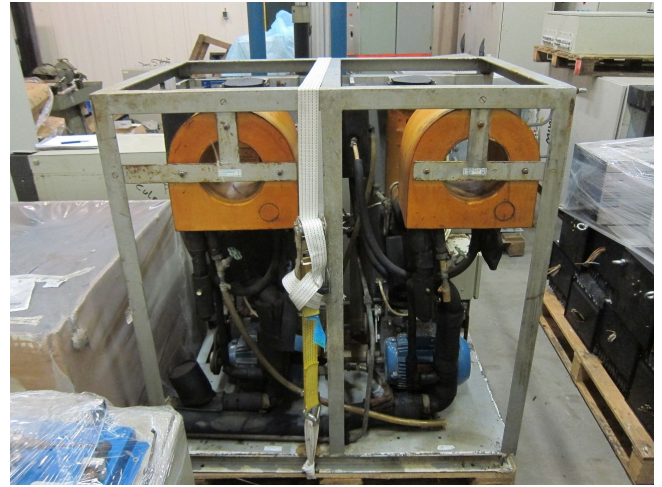
### Specifications

Brand	Ziegra
Type	UBE 5.000-2
Capacity	5.000 kg/24hr
Refrigerant	R404A
Sizes	1200x900x1250 mm (LxWxH)
Remarks	Electromotor: 1,5 kW at 1160 RPM
Stock	1



### Description

**Used Ziegra UBE 5.000-2**







The UBES.000-2 is a 5 tonne chip type flake ice machine with a choice of three different sizes of chip or flake. The machine is packaged, which means it includes the refrigeration, icemaker and controls in one compact unit so installation requires only the connection of utilities and ice pipelinel control.

Standard model guaranteed at 20°C air, 15°C water

Tropical model guaranteed at 35°C air, 25°C water

The hygienic sealed water system and boxed in construction makes this machine ideal for installation in factory environments where people may be working around the machine.

It is continuously rated and works fully automatically. No moving parts in the refrigeration circuit of the evaporator, hence no leaks due to rotating seals.

Chip type flake ice is made at -0.5°C so will not freeze together, making it ideal where no refrigerated storage is available.

The -2 machines are like two smaller ice machines wrapped up in one frame. The UBES.000-2 consists of 2 x 2.5 tonne machines in one body for maximum up time and reliability. -2 machines are very popular in remote areas, or where ice is vital to an operation.

## Specifications

Frame and panels :	Powder coated
Warranty:	1 year
Ice production (24hours):	5,000kg
Voltage:	400-3-50Hz
Control voltage:	240-1-50Hz
Machine weight:	1,400kg
Shipped dimensions: (wdxh)	2.18 x 1.86 x 2.07m
Shipped weight:	1,750kg
Power consumption:	18kW (20.6kW tropical)
Current consumption:	36A (48A tropical)
Refrigerant:	R404A (2 x 8.0kg)
Air-cooled condenser (standard)	airflow upwards, air volume 2 x 7,200 m <sup>3</sup> / hour (on request, sideways)
Water-cooled condenser (option)	on request
Heat emission:	40kW (41kW tropical)
Noise level:	75dBA
Water connection:	1/2"
Water supply (site):	15mm copper or plastic with 3/4" BSP fitting, minimum water pressure 2bar, maximum 6bar Potable: Ph range between 6.5 and 9.5
Overflow:	14mm
Fuse:	80A - Slow or equivalent D rated trip
Cable cross section:	16mm <sup>2</sup>